

NEW CHOICES

A project designed to determine the impact of participation in a dedicated day rehabilitation program on the lives of homeless men with substance abuse or co-occurring disorders (CODs) that reside in a large urban shelter.



Acknowledgements

- **Matt Baney, M.B.A.**
- **Russell Kellogg, M.D.**
- **Julius Powell, M.A.S.D.**
- **Vanessa Haney, M.F.A.**
- **Jeffery Bouchard-Burns, M.D.**
- **Gae Manuele, L.C.S.W.**
- **Anna Berdivchekaya, L.M.S.W.**
- **George Tsarouchis, B.A./C.A.S.A.C./T.**
- **Gregory Lacewell, A.S.**
- **Matthias Garry**
- **Barnaby Chancellor, PhD (Candidate)**
- **Meredith Hanson, D.S.W.**
- **Roslyn Chernesky, D.S.W**
- **Staff of NYC DHS – BSK Shelter.**

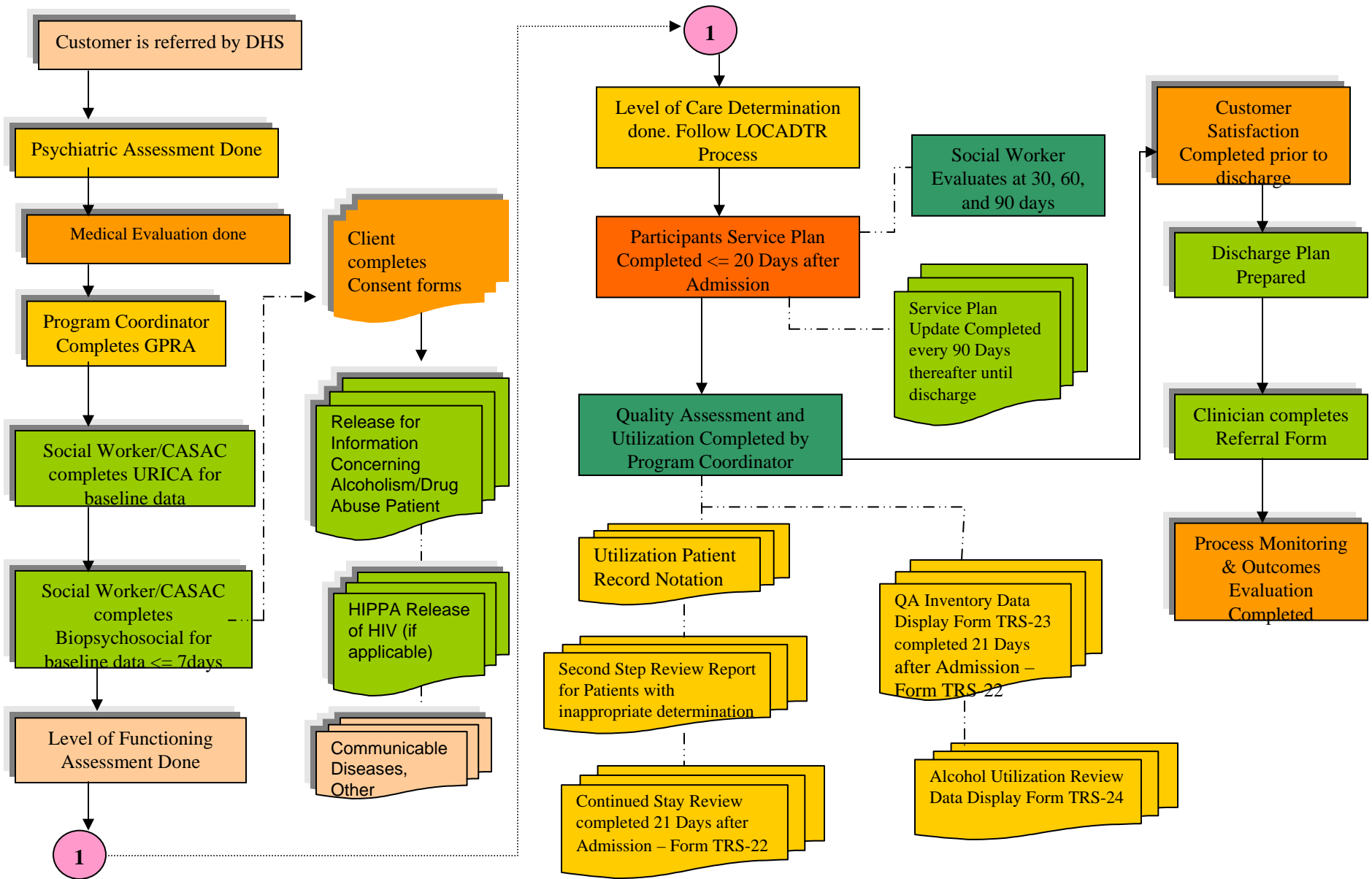


Disclaimer

“This study is approved by the NYC Department of Homeless Services (DHS). The analyses and interpretations expressed herein do not necessarily reflect the opinions of DHS or its staff.”



Project Work Flow – Comprehensive Ambulatory Substance Abuse Mental Health Program



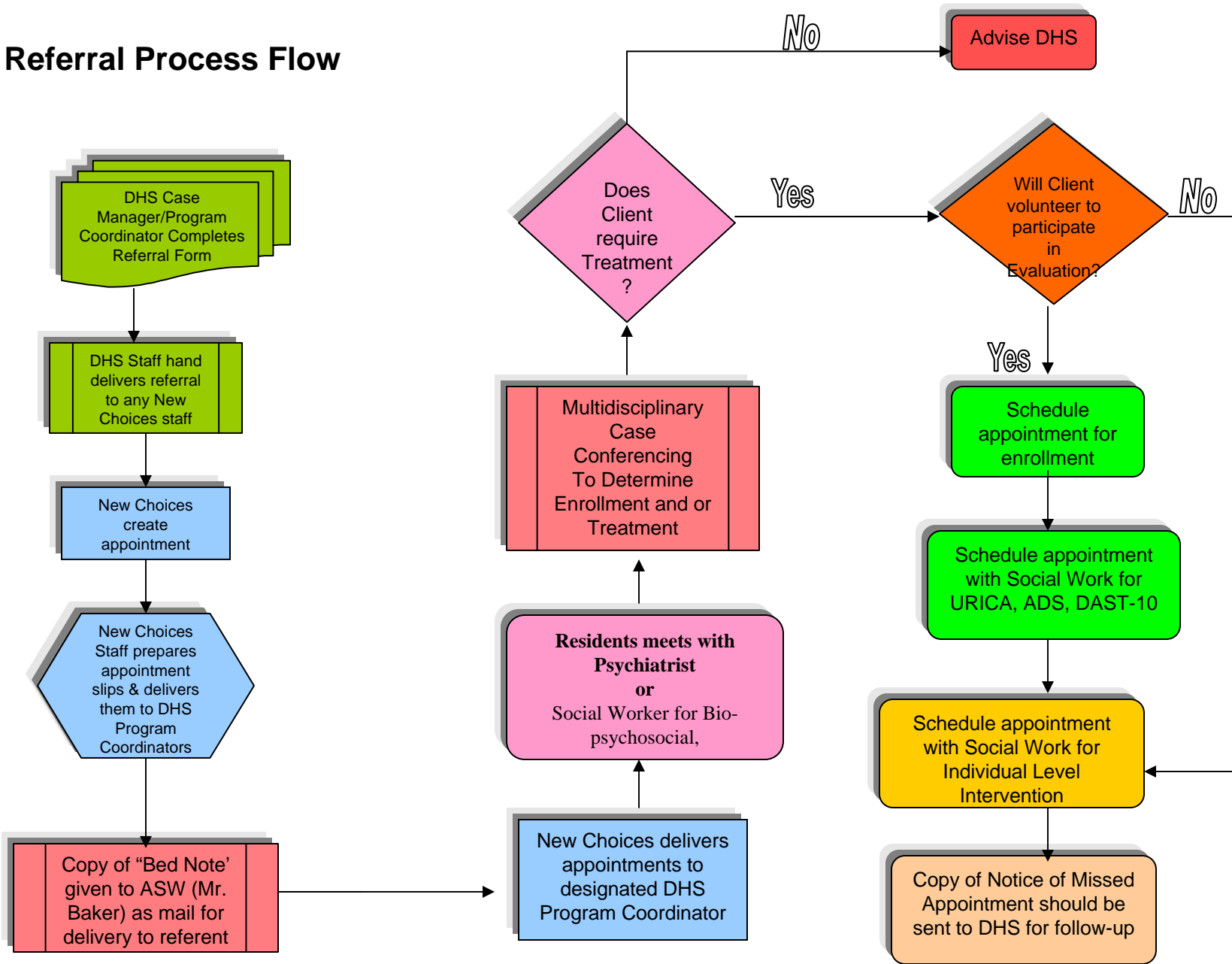
Funded by USDHHS SAMHSA Grant
Number: 1 DH79 T116715-01



**St. Vincent Catholic Medical Centers of
New York**

Referral Process Flow

Resident meets with Psychiatrist



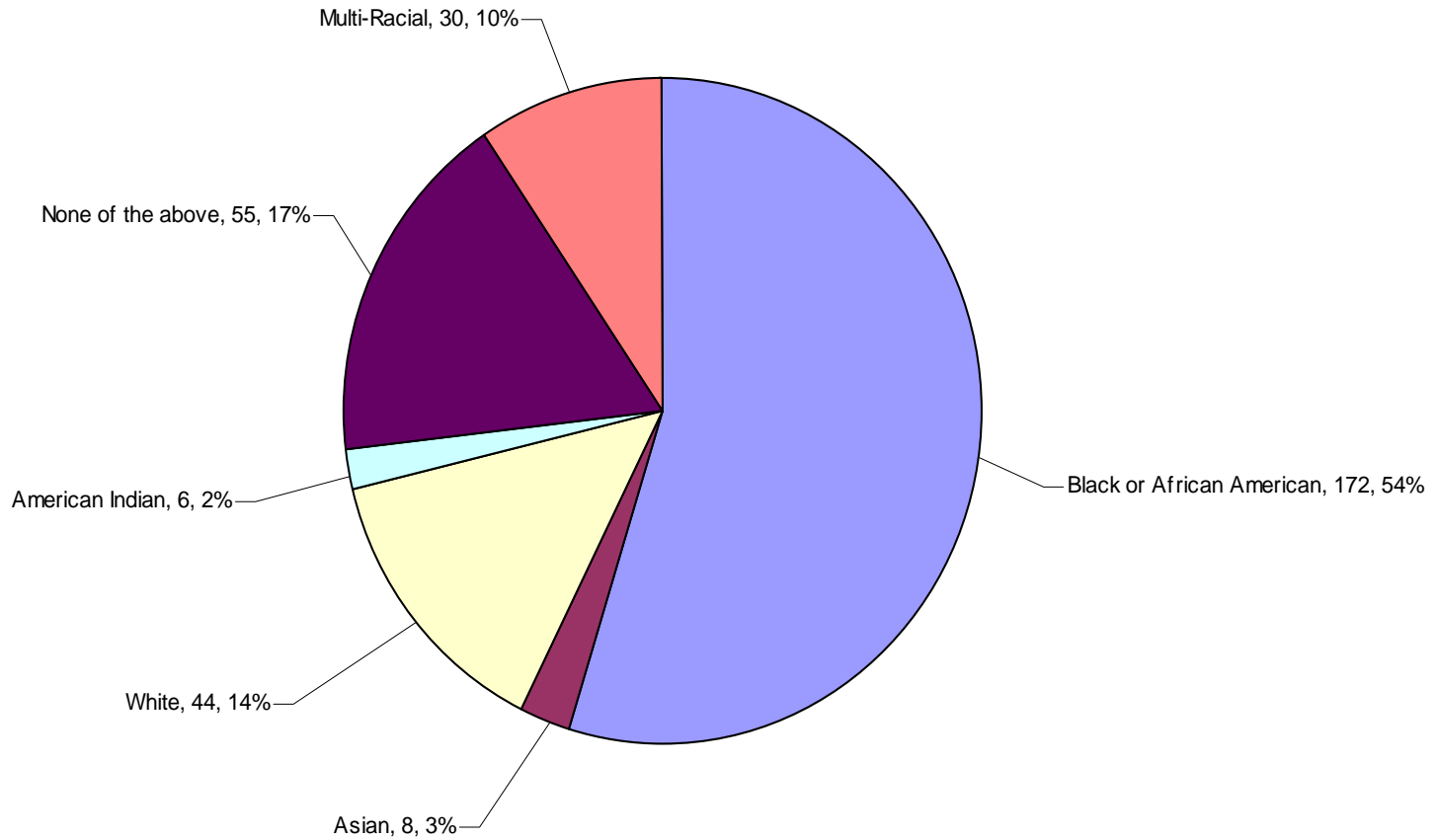
Funded by USDHHS SAMHSA Grant
Number: 1 DH79 T116715-01



St. Vincent Catholic Medical Centers of
New York

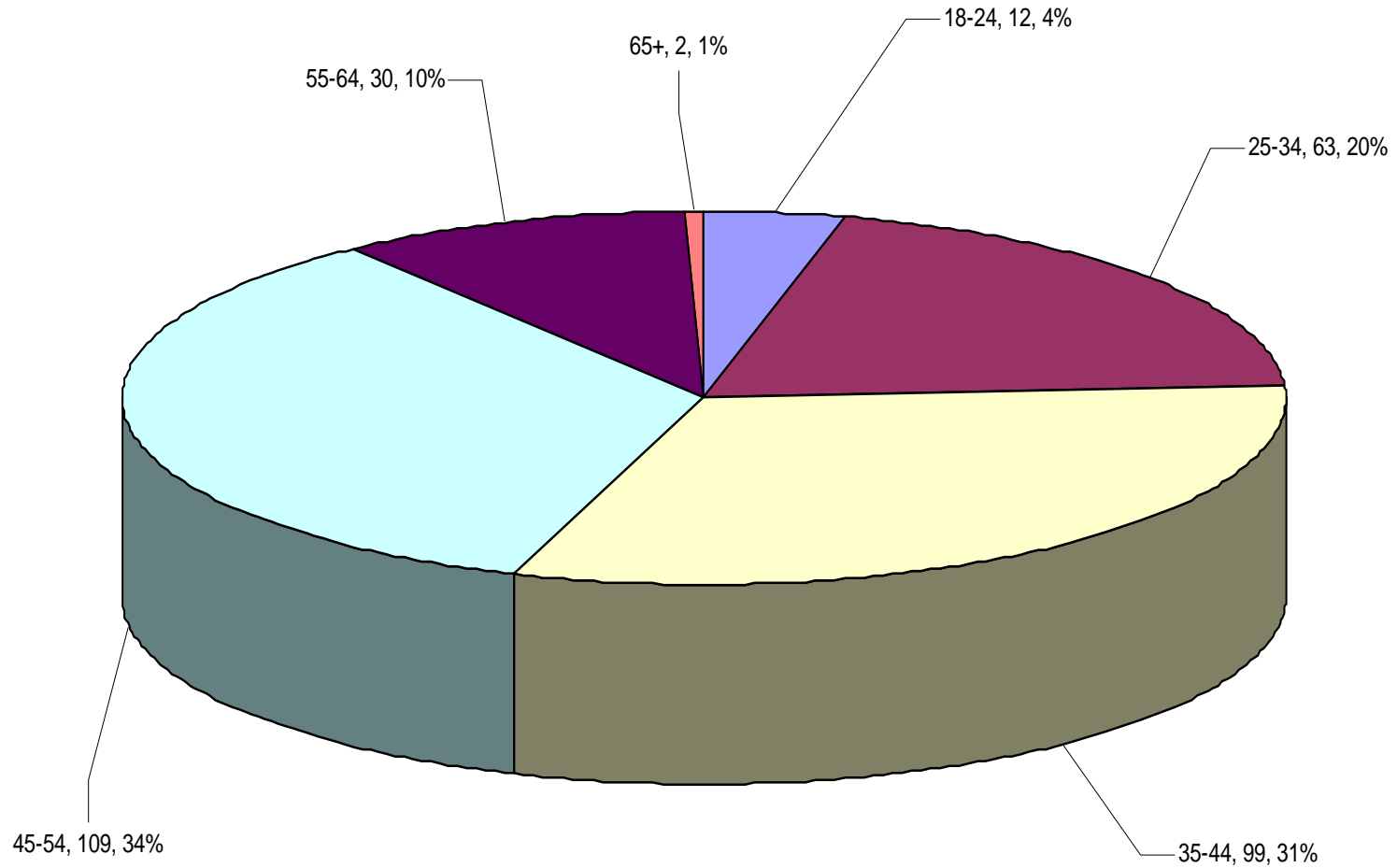
Race at Intake

Race At Intake
October 2006 to March 31, 2009, N = 315



Age Group at Intake

Age Group at Intake
October 1, 2006 - March 31, 2009, N = 315



Funded by USDHHS SAMHSA Grant
Number: 1 DH79 TI16715-01



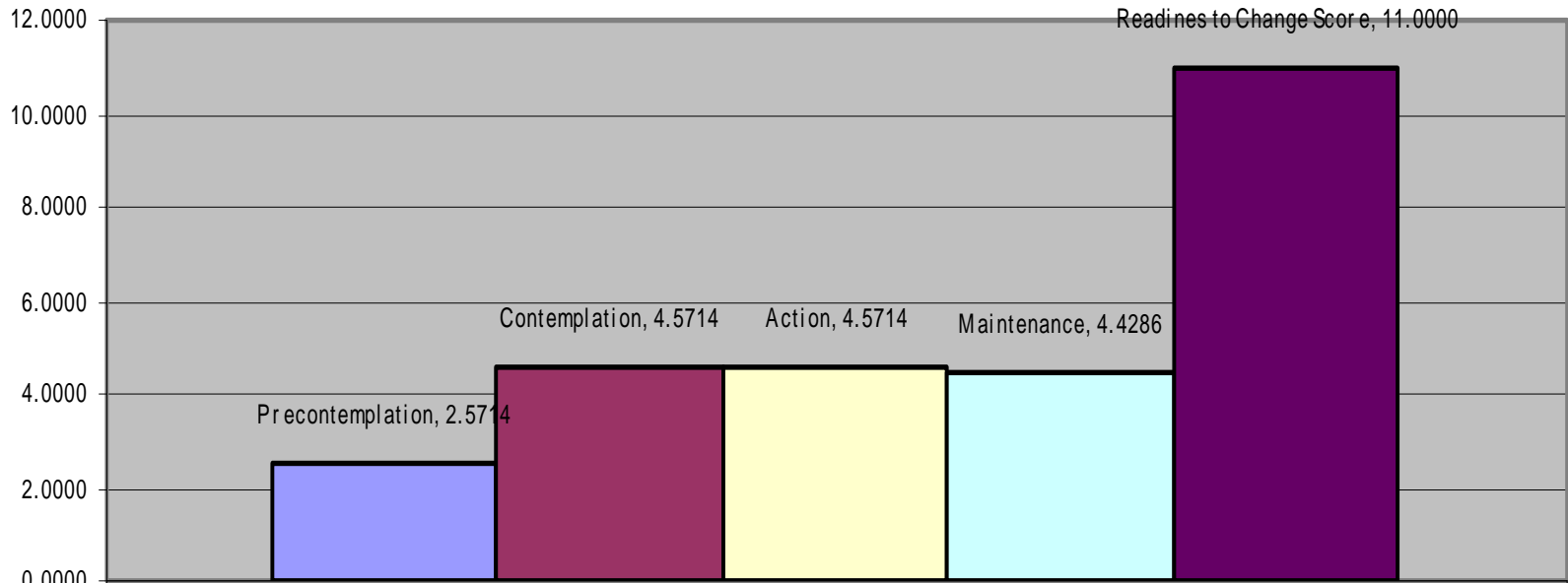
St. Vincent Catholic Medical Centers of
New York

Axis V Global Assessment of Functioning Scale

		Frequency	Percent	Valid Percent	Cumulative Percent
Valid	61-70 Mild symptoms, or some difficulty in social, occupational or school functioning	12	40.0	46.2	46.2
	51-60 Moderate symptoms, or moderate difficulties in social, occupational or school functioning	13	43.3	50.0	96.2
	41-50 Serious symptoms, or any serious impairment in social, occupational or school functioning	1	3.3	3.8	100.0
	Total	26	86.7	100.0	
Missing	9999.00	4	13.3		
Total		30	100.0		



Results of Typical URICA



NC0259

■ Precontemplation	2.5714
■ Contemplation	4.5714
■ Action	4.5714
■ Maintenance	4.4286
■ Readiness to Change Score	11.0000



Perceived Stage of Change Model

		Frequency	Percent	Valid Percent	Cumulative Percent
Valid	Precontemplation	8	26.7	38.1	38.1
	Contemplation	12	40.0	57.1	95.2
	Preparation	1	3.3	4.8	100.0
	Total	21	70.0	100.0	
Missing	9999.00	9	30.0		
Total		30	100.0		

Recommended Catalysts for Change (at least one), as per Treatment Improvement Protocol (TIP) 35

		Frequency	Percent	Valid Percent	Cumulative Percent
Valid	Consciousness Raising	7	23.3	87.5	87.5
	Self-Reevaluation	1	3.3	12.5	100.0
	Total	8	26.7	100.0	
Missing	9999.00	22	73.3		
Total		30	100.0		



ADS Raw Score

		Frequency	Percent	Valid Percent	Cumulative Percent
Valid	Advice	8	26.7	40.0	40.0
	Brief Counseling	8	26.7	40.0	80.0
	Outpatient Level I or II	3	10.0	15.0	95.0
	Intensive Outpatient/Inpatient Level II or III	1	3.3	5.0	100.0
	Total	20	66.7	100.0	
Missing	9999.00	10	33.3		
Total		30	100.0		

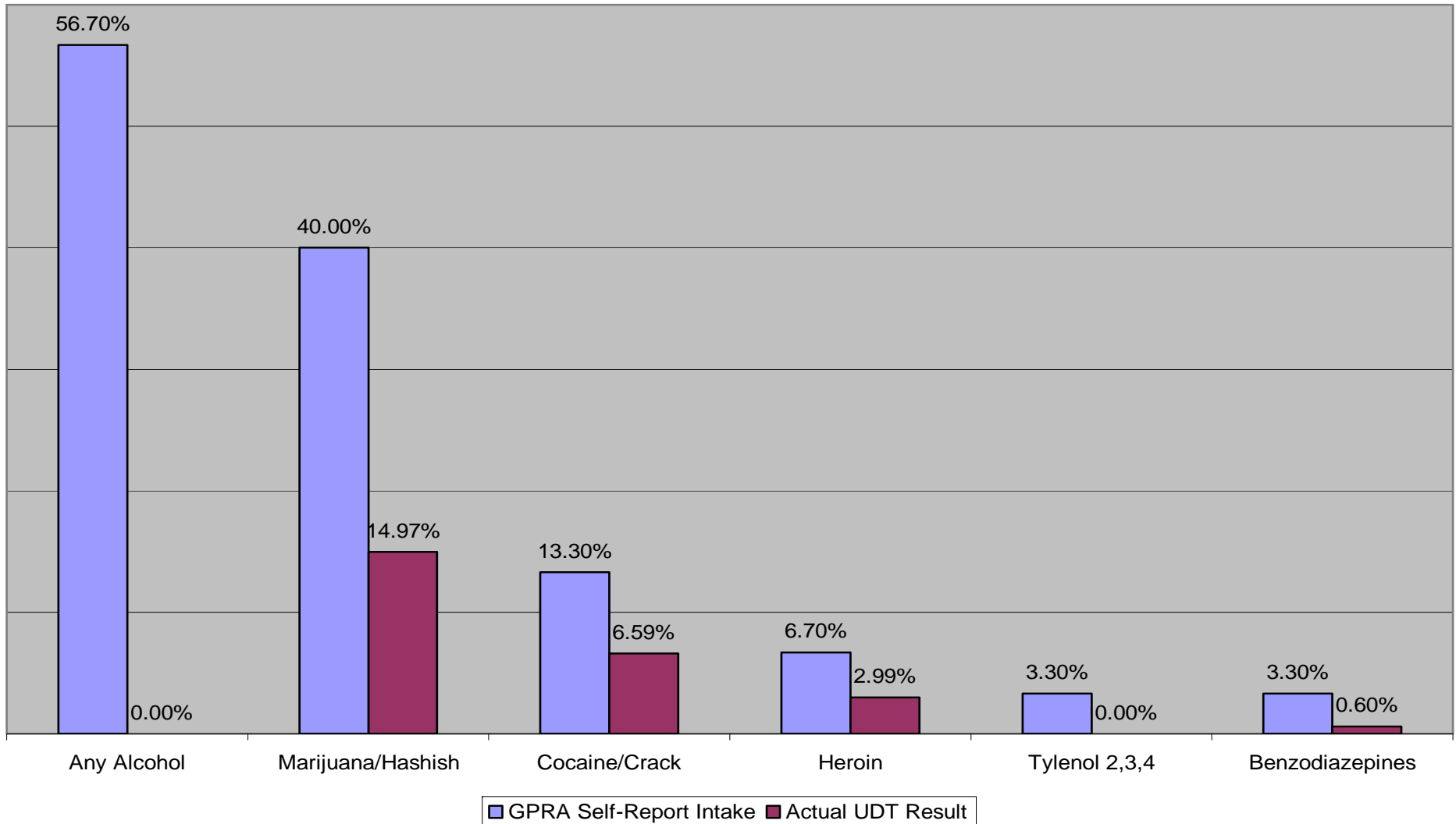
DAST-10

		Frequency	Percent	Valid Percent	Cumulative Percent
Valid	None Report	8	26.7	40.0	40.0
	Low Level	1	3.3	5.0	45.0
	Moderate Level	5	16.7	25.0	70.0
	Substantial Level	5	16.7	25.0	95.0
	Severe Level	1	3.3	5.0	100.0
	Total	20	66.7	100.0	
Missing	9999.00	10	33.3		
Total		30	100.0		



Alcohol & Illegal Drug Use

Alcohol & Illegal Drug Use Intake vs Actual UDT Jan-Mar 2009



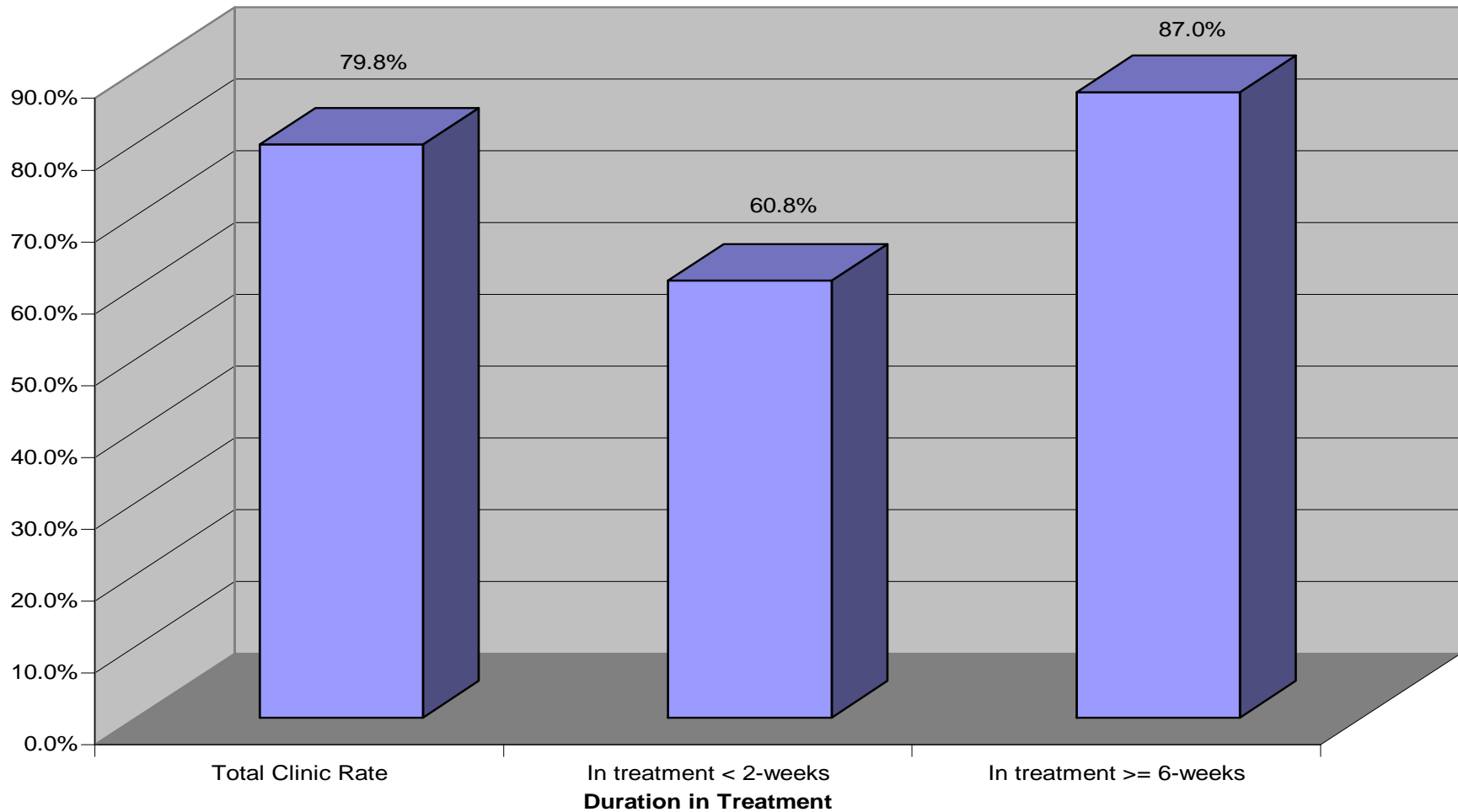
Funded by USDHHS SAMHSA Grant
Number: 1 DH79 TI16715-01



St. Vincent Catholic Medical Centers of
New York

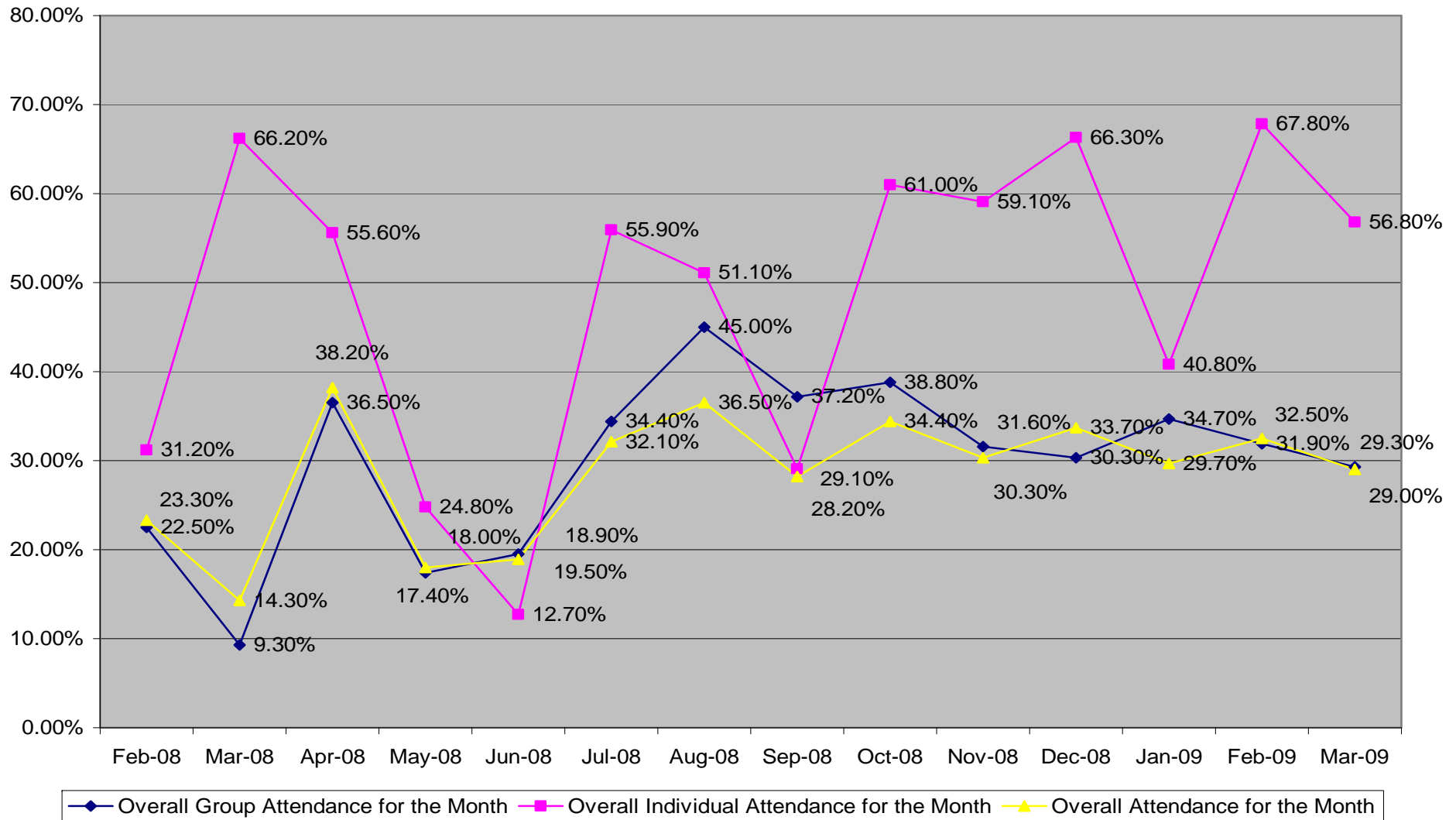
Abstinence Rate

Clinic Abstinence Rate January - March 2009



Monthly Accumulated Retention Rates

SVCMC Monthly Accumulated Retention Rates Feb '08 to Mar 09



Funded by USDHHS SAMHSA Grant
Number: 1 DH79 T116715-01



St. Vincent Catholic Medical Centers of
New York

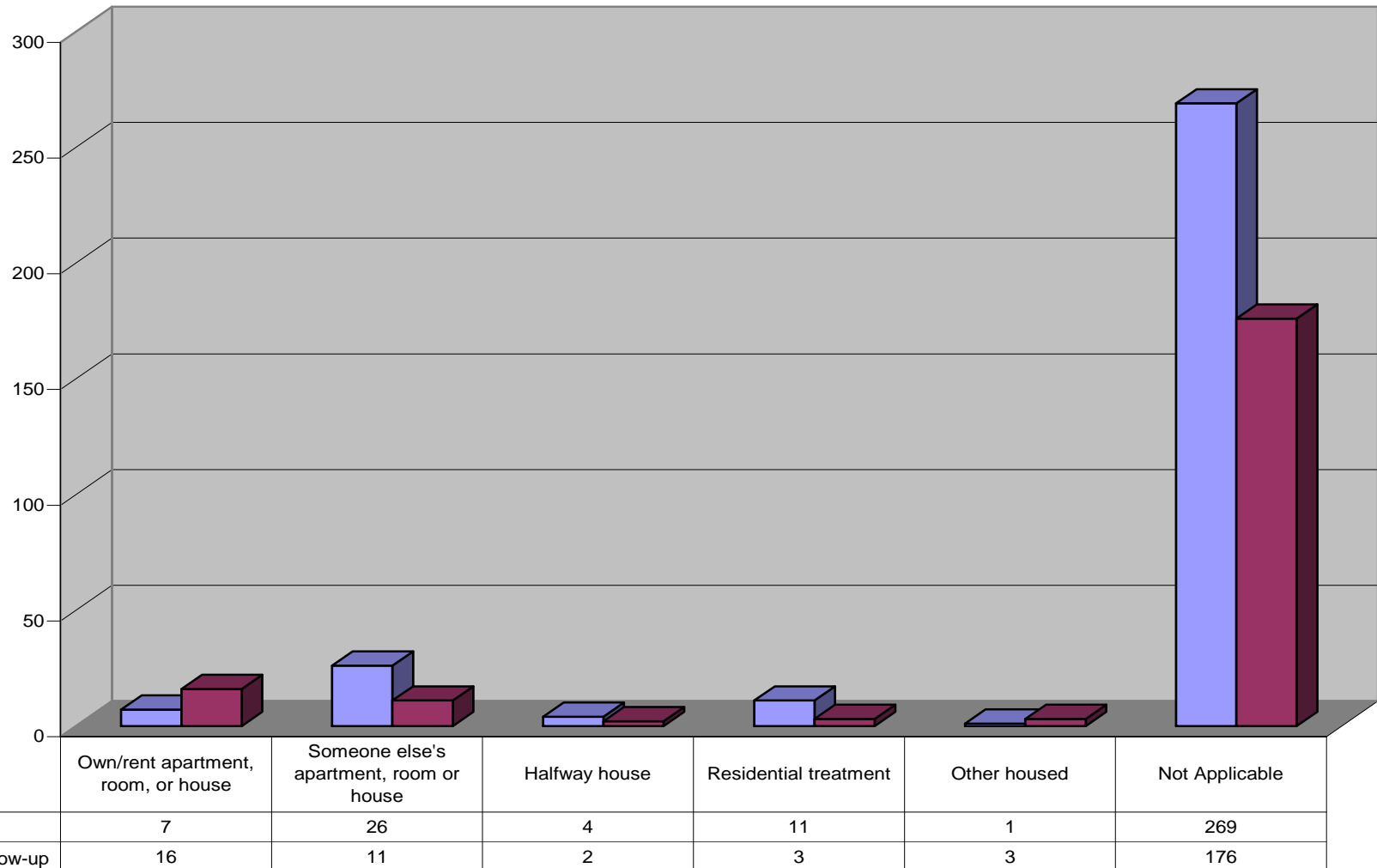
Monthly Accumulated Retention Rates

Table 4 Retention Measure	As at 01/31/09 N = 59	As at 02/28/09 N = 59	As at 03/31/09 N = 59
Overall Group Attendance for the month	34.70%	31.90%	29.30%
Overall Individual Attendance for the month	40.80%	67.80%	56.80%
Overall Attendance for the month	29.70%	32.50%	29.00%



Housing Situation Intake & Follow-up

In the past 30 days, where have you been living most of the time? October 2006-March 31, 2009



Intake
6-Month Follow-up

Intake 6-Month Follow-up

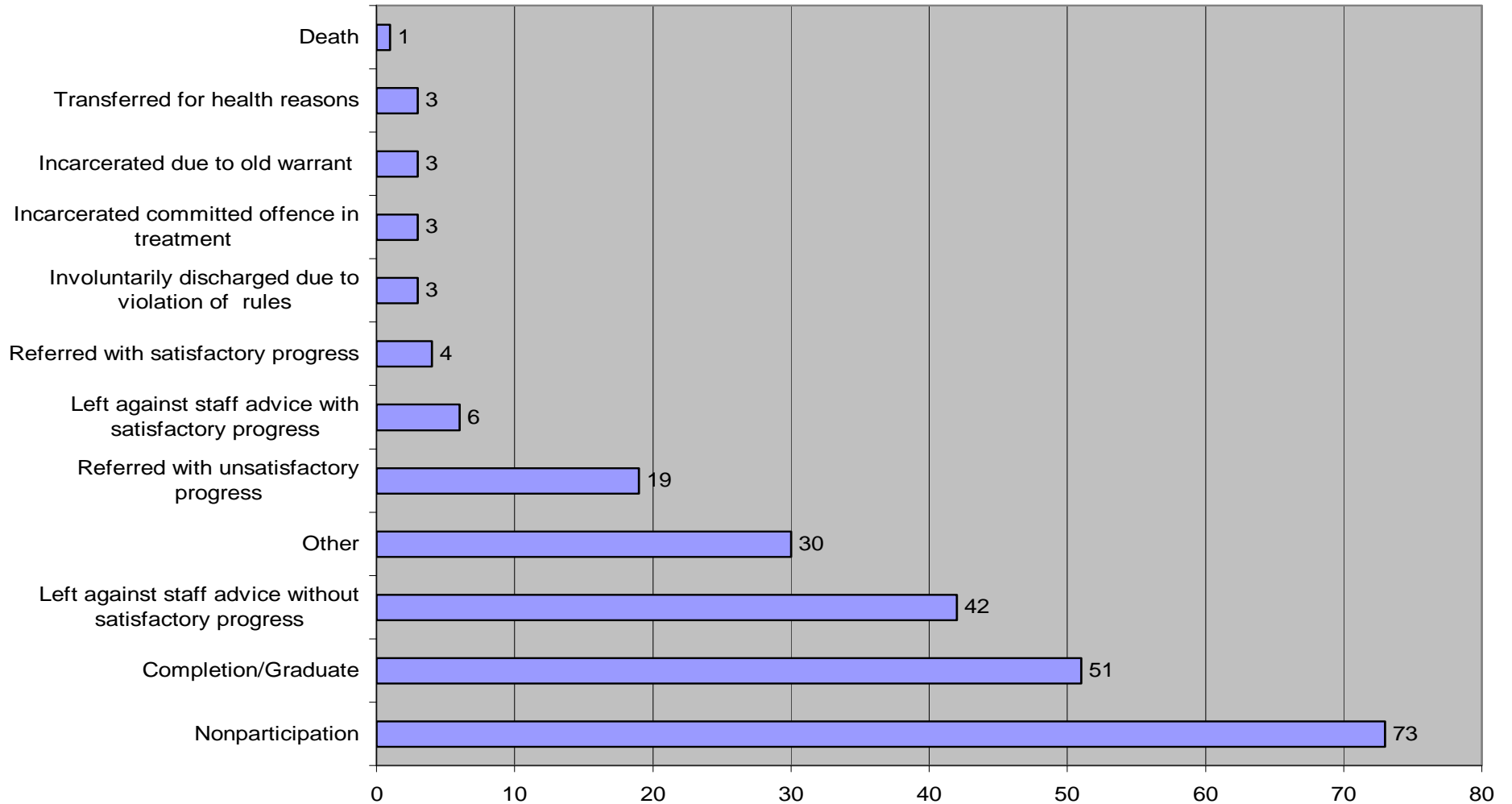
Funded by USDHHS SAMHSA Grant
Number: 1 DH79 TI16715-01



St. Vincent Catholic Medical Centers of
New York

Discharge Status

What is the client's discharge status? October 2006 to March 2009



Addressing trends in data

Trends in Data	27-Mar-08	5-Jun-08	31-Mar-09
Discharged from Treatment	36	87	173
Re-entered treatment after discharge	10	12	33
Intake assessment	N=99	N=118	N=326
URICA	53.20%	53.60%	62.00%
ADS/DAST-10	53.20%	54.10%	62.00%
6-Month follow-up:		n=119	n=199
Mean DAST-10 Score	4.16 to 0.71	4.07 to 2.13 (n=15)	4.4 to 4.6 (n=81)
Mean ADS Score	6.33 to less than 0.71	6.18 to less than 2.07	6.65 vs. 6.2
URICA readiness to change score		9.68 to 10.54	9.90 to 10.00
Average age range (20-71)	42.56%	42.36%	42.30%
Black	48.10%	47.90%	50.20%
Hispanic	14.60%	14.60%	16.10%
White	15.10%	12.80%	10.50%
Multi-racial persons	20.50%	23.00%	20.10%
Living in shelter <= 30 days	80.60%	79.10%	78.80%
Housed <= 30 Days	12.40%	13.60%	13.80%



Successes & Challenges

Intake Data	27-Mar-08	5-Jun-08	31-Mar-09
Assessments done	N=186	N=220	N=326
Abstinent from AOD <=30 Days	42.50%	55.90%	40%
No Crime Involvement	91%	91.40%	91.10%
Employed or attending school	31.90%	33.80%	35.70%
Health or behavioral consequences	75.00%	40.00%	39.40%
Social Connectedness	75.10%	75.30%	72.50%
Permanent Housing	4	4	8
Six-Month Outcomes	N=50	N=100	N=199
Abstinent from AOD <= 30 Days	(46.8% to 58.0%)	53%	46.20%
No crime involvement	Stable	Stable	Stable
Employed or attending school	(18.0% to 40.0%)	(33.8% to 48.0%)	(31.2% to 46.0%)
Health or behavioral social consequences	Positive	Positive	Dropped from 57.7% to 44.2%
Social Connectedness	No marked changes	No marked changes	76.1% to 82.2%
Permanent Housing	4	15	37
Length of stay	14.16 weeks	18.9 weeks	19.3 weeks



Conclusions and Implications



- The findings to date suggest that New Choices is continuing to attain positive outcomes for clients in terms of substance use.
- It has reached a point of stability in terms of the characteristics and needs of the clients admitted for treatment.
- It continues to have a positive impact on clients in terms of substance use, alcohol use in particular, health status and employment/training.
- In general, New Choices seems to be attaining its stated outcome goals, while retaining clients in treatment.

