

# Federally Qualified Health Centers: **THE HEART** OF HEALTHY COMMUNITIES

**600  
SITES**

across New York State

serve **1.8** MILLION  
PATIENTS




**CHCANY** DEFINING NEW DIRECTIONS  
Community Health Care Association of New York State  
[www.chcanys.org](http://www.chcanys.org)

**2016**

# THE HEART OF HEALTHY COMMUNITIES

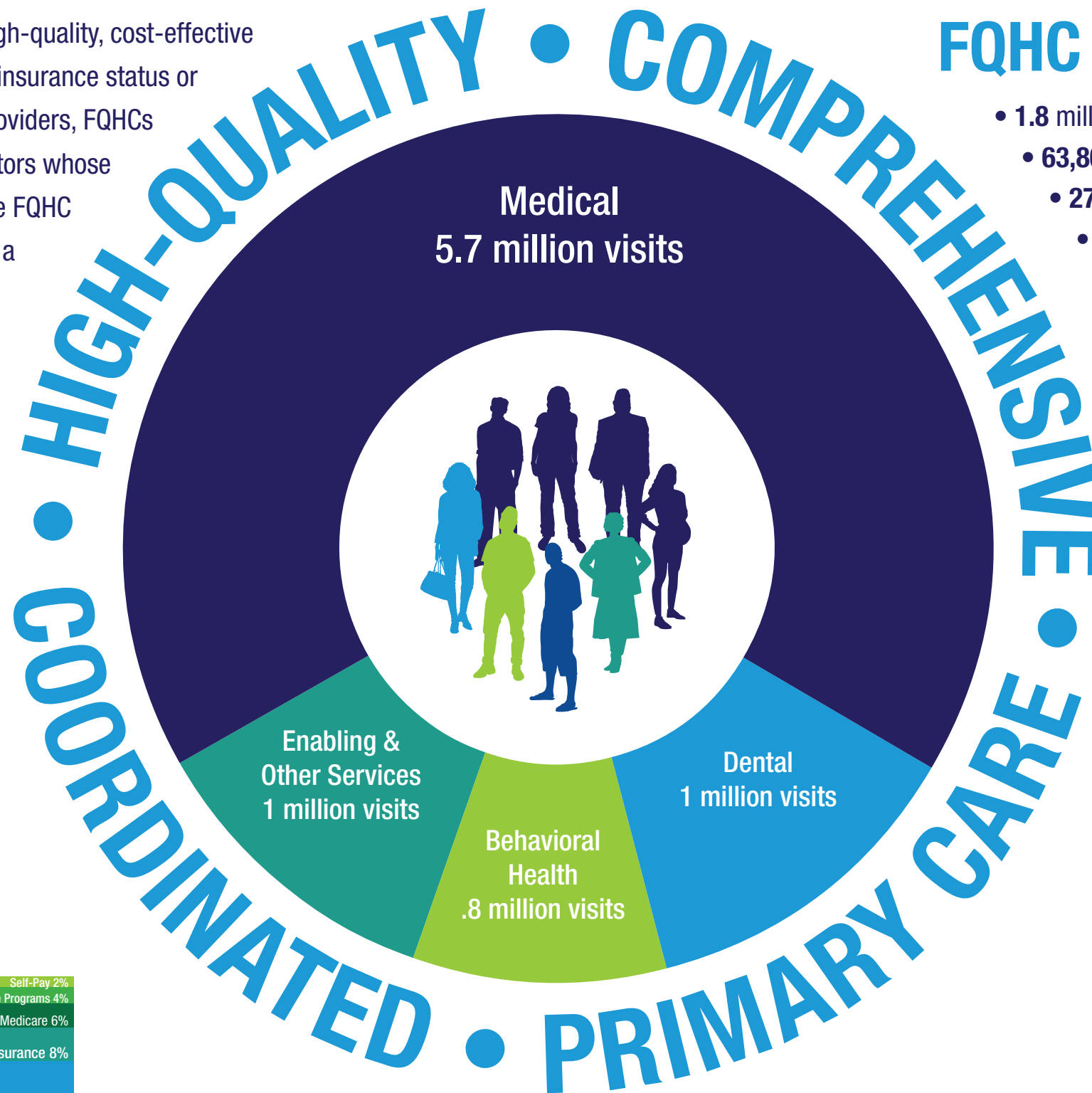
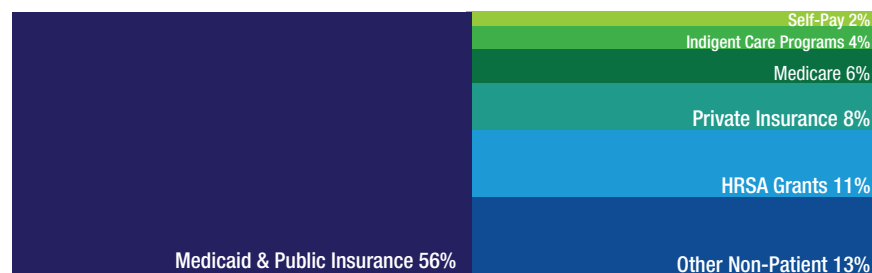
Federally qualified health centers (FQHC) provide high-quality, cost-effective primary care to all New Yorkers, regardless of their insurance status or ability to pay. New York's primary care safety net providers, FQHCs are governed by consumer-majority boards of directors whose priorities reflect the needs of their communities. The FQHC model of comprehensive, community-based care is a central component of state and federal healthcare delivery reform efforts.



**PATIENT-CENTERED MEDICAL HOMES**

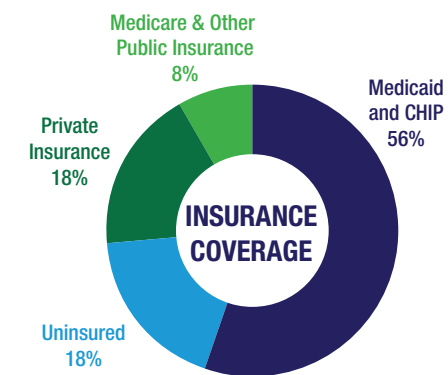
**70%** of New York State FQHCs are NCQA Patient-Centered Medical Home (PCMH) accredited, with the majority having attained the highest level of practice transformation recognition (Level 3).

## FQHC REVENUE SOURCES

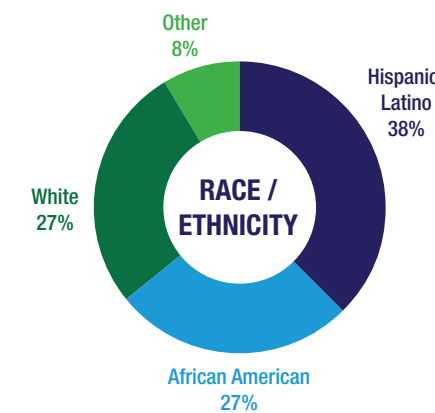


## FQHC PATIENTS

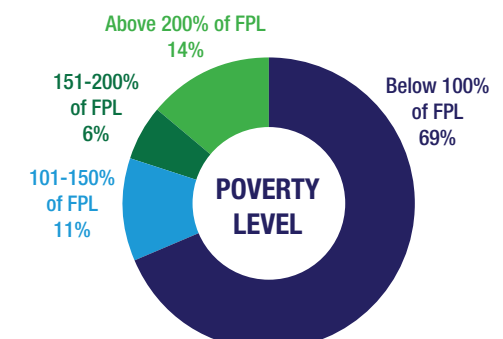
- 1.8 million patients
- 63,800 patients are seen at school-based health centers
- 27% are best served in a language other than English
- 85,500 are homeless
- 21,200 are migrant or seasonal farmworkers



**56%** receive Medicaid or CHIP



**65%** are Hispanic/Latino or African American



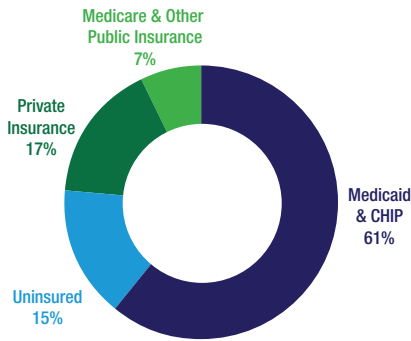
**69%** live below the Federal Poverty Line

SOURCES: This fact sheet was compiled by the Community Health Care Association of New York State from the following sources: 1) 2009-2014 FQHC Uniform Data System Reports (FQHC data); 2) 2014 Census, American Community Survey (statewide population data); and 3) 2014 NYS Department of Health Medicaid and Child Health Plus enrollment data.

# FQHC PATIENTS IN NEW YORK CITY

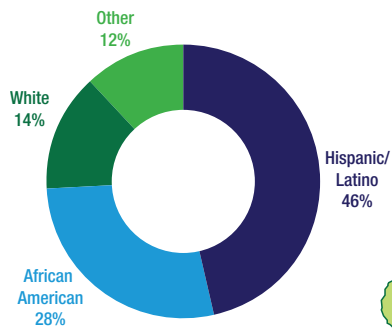
## INSURANCE COVERAGE

Three-quarters of FQHC patients in NYC are Medicaid or CHIP beneficiaries or are uninsured.



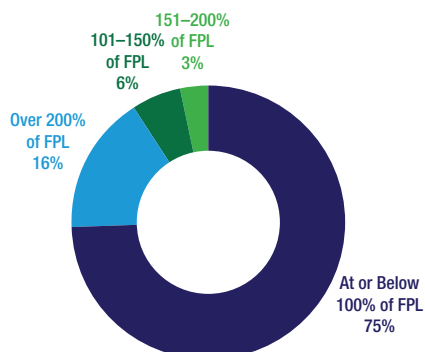
## RACE/ETHNICITY

A majority of FQHC patients in NYC are Hispanic or Black.

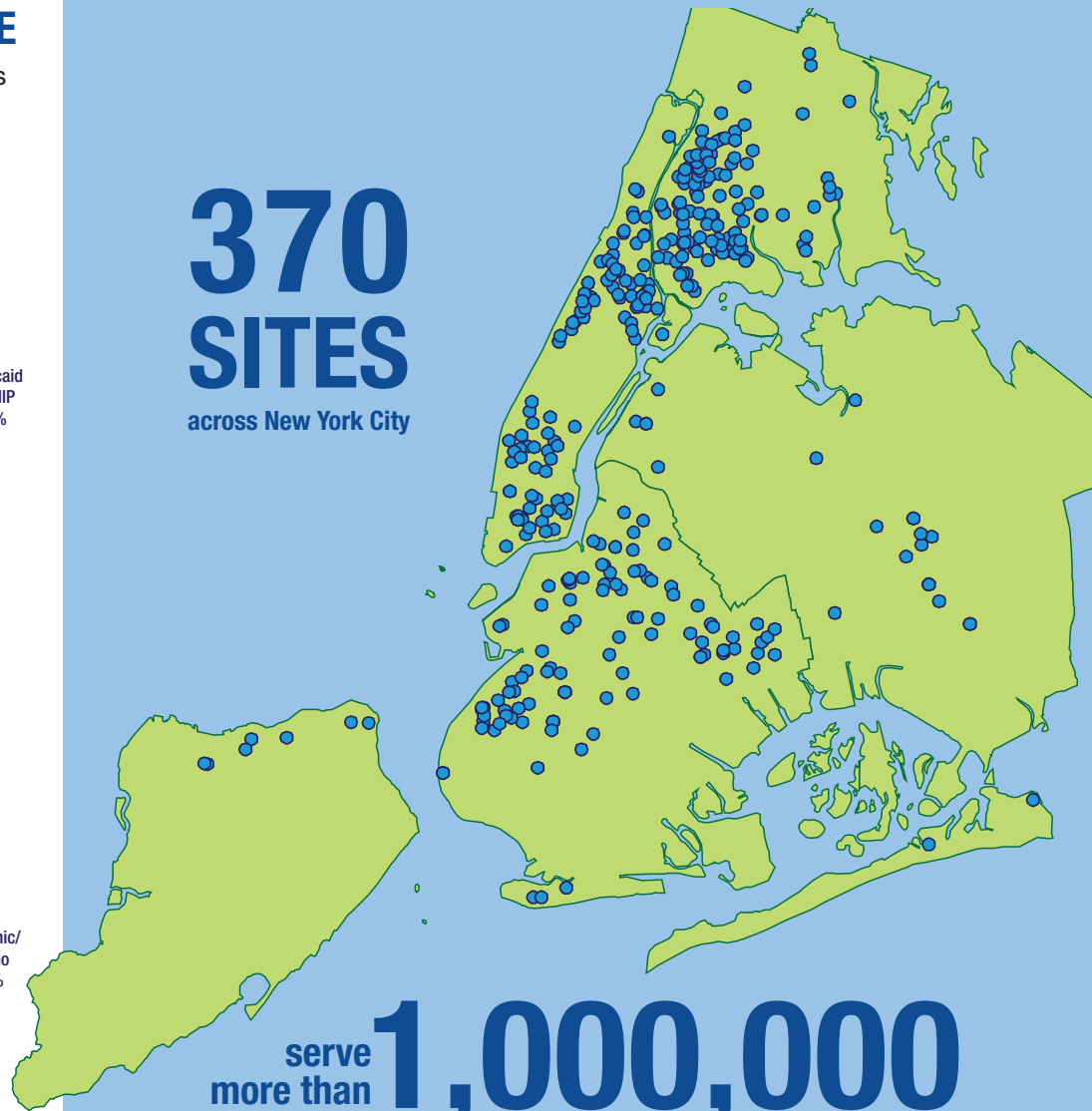


## POVERTY LEVEL

An estimated 86% of FQHC patients in NYC live at or below 200% of the Federal Poverty Level (FPL).



**370 SITES**  
across New York City



serve more than **1,000,000** PATIENTS

- 28% are best served in a language other than English
- 64,300 are homeless
- 46,300 are seen at school-based health centers
- 71,500 are seniors (aged 65 and above)
- 314,000 are children and teenagers (under age 18)
- 89,000 receive mental health services